



TouchTool™ - WiPad

RF-Based Audience Response System

TouchTool WiPad is a large-scale audience response system which enhances interactivity in conferences, lectures and presentations. With single-button-press remote keypads, TouchTool WiPad allows you to receive instant feedback from up to 3000 users over a 300 Meter area at any given time.

With the included plug-in software for MS PowerPoint, TouchTool enriches your presentation by involving your audience and increasing their attentiveness. Give a PowerPoint presentation and receive audience feedback with remote keypads!

Hardware Features and Specifications

Receiver

Dimensions: 50mm x 50mm x 18mm with an antenna
 Power: DC 5V / Provided by computer USB port
 RF Receiving Angle: 360°
 Receiving Distance: Maximum 100 meters in open area
 Connector: USB port to mini B Cable

Instructor Keypad

Dimensions: 132mm x 68mm x 16mm
 Key Buttons: 13
 Battery Requirement: "AAA" 1.5 volt x 2
 RF Signal: Max 100 meters transmission distance
 Sleep Mode: Enters Sleep Mode within 10 min (< 90 uA)
 RF Wavelength: 2.4G

Audience Keypad

Dimensions: 132mm x 68mm x 16mm
 Key Buttons: 13
 Battery Requirement: "AAA" 1.5 volt x 2
 RF Signal: Max 100 meters transmission distance
 Sleep Mode: Enters Sleep Mode within 10 min (< 90 uA)
 RF Wavelength: 2.4G

Operating System

Windows 2000/ XP/ 2003

PC Hardware

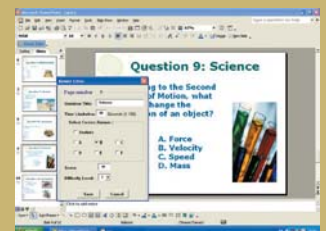
Pentium 4 or higher with 512 MB RAM or higher, 1 USB Port and Microsoft Office 2000 or later.

Classroom Teaching
Market Research
Board Meetings
Electronic Voting
Continuing Medical Education
Enterprise Risk Management
Sales Training

Software Features

The TouchTool software runs as a plug-in with Microsoft PowerPoint and has the following features:

- Supports multiple-choice and buzz-in question modes
- Instantly displays responses (cumulative + instant)
- Exports different report types for differing needs
- Supports class management with name/ID matching table
- Allows creation of multimedia coursework within PowerPoint
- Includes Answer Editor to setup answer and score keys within each PowerPoint slide
- Executes quizzes/voting within normal PowerPoint presentation
- Instantly collects audience feedback
- Automatically marks audience answers
- Stores collected data in chosen format



Name	ID	Question	Answer	Score
John Doe	101	Question 9	B	1
Jane Smith	102	Question 9	B	1
Mike Johnson	103	Question 9	C	0
Sarah Brown	104	Question 9	B	1
David White	105	Question 9	B	1